



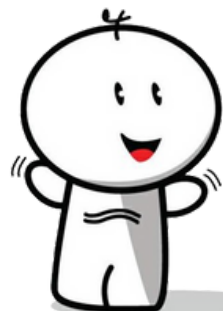
PRINCESS CRUISES

604.717.1111

# 14 Nights Alaska (Grand Adventure)

## Check-in Glaciers:

Glacier Bay National Park, College Fjord, Hubbard Glacier



### Alternate Sailings:-

Caribbean Princess: Jun 21, Jul 05, Aug 2, 16, 30

Coral Princess: Jun 25, Jul 09, Jul 23, Aug 06, 20

Sapphire Princess: Jul 12, 26, Aug 23

FROM Inside Twin Share/pp

# \$1,468

Bonus OBC of USD60/cabin

Sail date: Aug 02

The Princess® Medallion® is an award-winning wearable technology, a coin-sized wearable that unlocks 12 smart features like fast boarding, contactless payments, keyless stateroom entry, on-demand ordering, friend locator, and more. Enjoy a TrulyTouchless™ cruise with more ease, safety, and time to do what you love.



PCL- CARIBBEAN

### Ship Facts

Passenger: 3,140  
Tonnages: 112,894  
Length: 952 ft  
Crew: 1,200  
Refreshed: 2022



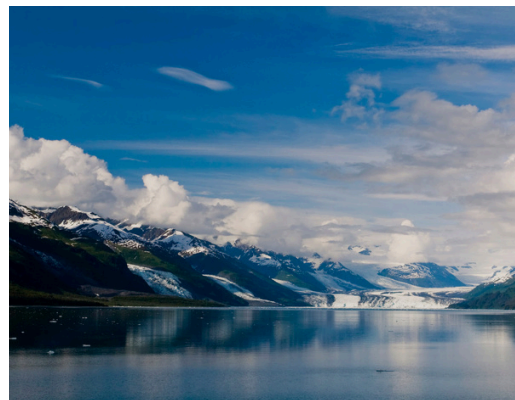
## Itinerary:

- Aug 02 Departs from Vancouver BC CA
- Aug 03 At Sea, Cruising
- Aug 04 Ketchikan, AK US
- Aug 05 Juneau, AK US
- Aug 06 Skagway, AK US
- Aug 07 Glacier Bay National Park (Cruising)
- Aug 08 College Fjord, AK (Cruising)
- Aug 09 Anchorage, Alaska, US
- Aug 10 Hubbard Glacier, AK (Cruising)
- Aug 11 Glacier Bay National Park
- Aug 12 Skagway, AK US
- Aug 13 Juneau, AK US
- Aug 14 Ketchikan, AK US
- Aug 15 At Sea, Cruising
- Aug 16 Arrive in Vancouver BC CA

Prices are accurate at time of publication, is based on double occupancy at per person rate, includes all applicable taxes, and does not include gratuities, personal expenses, and travel insurance. The port of calls may change as needed at cruise lines discretion. OBC is per cabin.



## [Vancouver Roundtrip]



Accredited Travel Agency



(604)718.9000

BURNABY

Unit 1328 - Crystal Mall  
Burnaby BC #43403

(604)248.8000

RICHMOND

Unit 1060-Aberdeen Centre  
Richmond BC #82888

(604)472.3000

COQUITLAM

Unit 2351-Coquitlam Centre  
Barnet Hwy BC #87162

Offers are subjected to change without prior notice. Restrictions and Deviation/amendment fees will be applied.



info@silkway.com

silkwaytravel.ca  
silkway.com

Tour Code: CRS\_PCL-14NALK-YVRR-2025-ST/SS-EN

Issued on: May 28, 2025